

# PC TABLE

DESIGN BY PIERRE CHARPIN



Pierre Charpin's PC Table Lamps is a collection of refined freestanding tabletop lamps. The lamps are constructed in anodised aluminium, which makes the surface more resistant to corrosion. The light source is hidden from view by a removable polycarbonate moulded diffuser, creating both a soft directional downlight effect and determining the form of the lamp itself. The PC Table Lamps are available in a variety of sizes and colours, and are suitable for both contract and domestic markets.

## PRODUCT DETAILS

- / Part of a progressive and technologically advanced lighting collection.
- / A family of refined pendants, task lights, table and portable lamps.
- / CE approved.
- / Designed for use with a replaceable standard retro fit LED dimmable bulb.
- / Integrated touch dimmer switch.
- / Table lamp suitable for both private and office environments.
- / Qualified for contract use.

**MATERIALS**

SHADE / Anodised spun aluminium shade.

BASE / Anodised extruded aluminium base with a cast iron internal weight.

DIFFUSER / Injection moulded translucent polycarbonate diffuser.

CABLE / Braided textile cable with PVC insulation.  
Please note that the cable is black for all colour options.

**COLOUR & FINISH**

Please note that the colour codes are indicative.

Available in 2 different colours.  
/ Soft black anodised (RAL 9004)  
/ Aluminium anodised

**COLOUR**



SOFT BLACK



ALUMINIUM

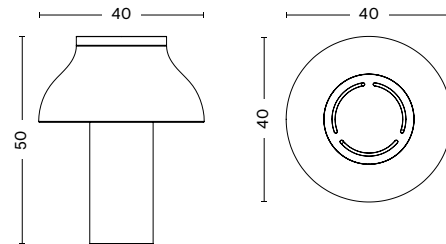
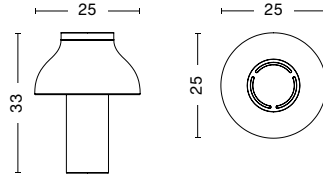
**DIMENSIONS**

**SMALL**

/ WIDTH 25 cm / 9.8"  
/ DEPTH 25 cm / 9.8"  
/ HEIGHT 33 cm / 13"

**LARGE**

/ WIDTH 40 cm / 15.7"  
/ DEPTH 40 cm / 15.7"  
/ HEIGHT 50 cm / 19.7"



## TECHNICAL SPECIFICATION

### SMALL

- / LIGHT SOURCE / E27 / LED
- / POWER\* (watts) / Max 13W
- / FLUX\* (lumens) / 360lm
- / CCT\* (kelvin) / 2700k
- / CRI\* (1-100) / 80
- / DIMMABLE / Yes
- / POWER SUPPLY / 220-240V AC at 50/60Hz EU plug mounted (UK adaptor included)
- / CORD LENGTH / 200 cm
- / SWITCH / Integrated touch dimmer (entire base of lamp)
- / BULB SPEC. / 1 x LED E27 Max 13W 1000 - 1400lm 2700k. Dimmable only. (A Series styles / A19 max. size Ø60 mm. G series or 'globe' styles are not recommended)

\*Bulb sold separately. Photometrics and the specification shown is taken using our recommended LED E27 bulb fitted in the production luminaire

## CERTIFICATIONS

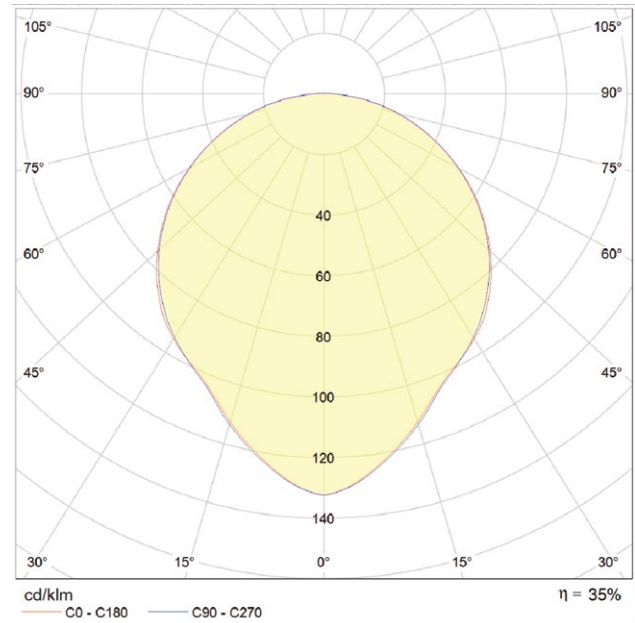
- / CE approved: this product has been assessed and complies with the essential requirements of the relevant European directives.



Tested according to the following European EN / IEC standards which relate specifically to electrical lighting products including:

- / EN 55015:2013 (radio disturbance)
- / EN 61547:2009 (EMC immunity)
- / EN 61000-3-2:2014 (EMC compatibility)
- / EN 61000-3-3:2013 (EMC compatibility)
- / EN 60598-2-4:1997 (portable luminaires)
- / EN 60598-1:2015 (general requirements)
- / EN 62493:2010 (human exposure to EMC)

## PHOTOMETRICS



## DOWNLOADS

2D files, 3D files and packshots are available in our imagebank at [hay.com](http://hay.com).

Care and maintenance instructions and CE attestation of conformity certificates are available at [hay.com](http://hay.com)

An overview of the complete Hay lighting collection and accessories, can be found at [hay.dk/en/contract/products/lighting](http://hay.dk/en/contract/products/lighting)

## TECHNICAL SPECIFICATION

### LARGE

- / LIGHT SOURCE / E27 / LED
- / POWER\* (watts) / Max 13W
- / FLUX\* (lumens) / 550lm
- / CCT\* (kelvin) / 2700k
- / CRI\* (1-100) / 80
- / DIMMABLE / Yes
- / POWER SUPPLY / 220-240V AC at 50/60Hz EU plug mounted (UK adaptor included)
- / CORD LENGTH / 200 cm
- / SWITCH / Integrated touch dimmer (entire base of lamp)
- / BULB SPEC. / 1 x LED E27 Max 13W 1000 - 1400lm 2700k. Dimmable only. (A Series styles / A19 max. size Ø60 mm. G series or 'globe' styles are not recommended)

\*Bulb sold separately. Photometrics and the specification shown is taken using our recommended LED E27 bulb fitted in the production luminaire

## CERTIFICATIONS

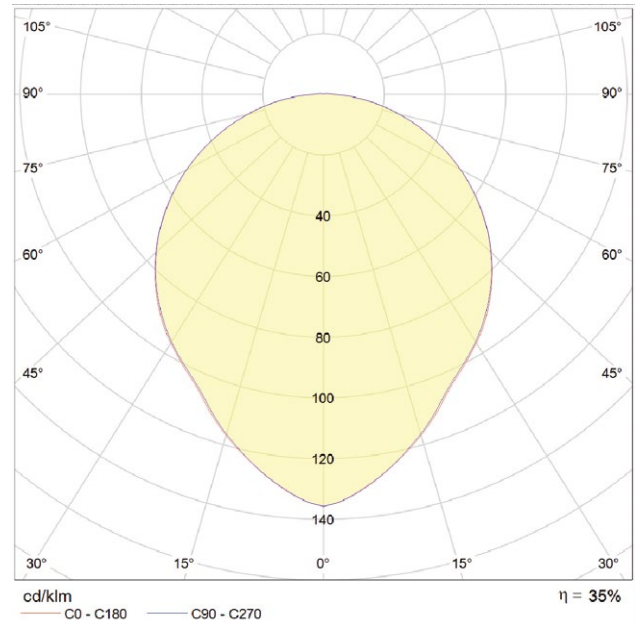
- / CE approved: this product has been assessed and complies with the essential requirements of the relevant European directives.



Tested according to the following European EN / IEC standards which relate specifically to electrical lighting products including:

- / EN 55015:2013 (radio disturbance)
- / EN 61547:2009 (EMC immunity)
- / EN 61000-3-2:2014 (EMC compatibility)
- / EN 61000-3-3:2013 (EMC compatibility)
- / EN 60598-2-4:1997 (portable luminaires)
- / EN 60598-1:2015 (general requirements)
- / EN 62493:2010 (human exposure to EMC)

## PHOTOMETRICS



## DOWNLOADS

2D files, 3D files and packshots are available in our imagebank at hay.com.

Care and maintenance instructions and CE attestation of conformity certificates are available at hay.com

An overview of the complete Hay lighting collection and accessories, can be found at [hay.dk/en/contract/products/lighting](http://hay.dk/en/contract/products/lighting)

# HAY