





With Plenum™ we are paying homage to modern workspaces and making room for collaboration. This high-back sofa system designed by Jaime Hayon is fit for embracing any space – whether the need is to be individual together or simply together.

DESIGN  
JAIME HAYON, 2018





ABOUT PLENUM	6
THE ABSP CONCEPT	8
DESIGNING PLENUM	10
THE MATERIALS	12
THE COLOURS	14
FEATURES	15



# ABOUT PLENUM

Plenum™ is a high-back sofa system consisting of one-seater, two-seater and three-seater units. It is flexible and offers features such as power plugs, USB ports and mounted or separate tables for a functional but aesthetically pleasing experience in any space, be it for collaboration, concentration or relaxation.

Plenum is designed to fulfil the needs that arise in the modern workplace. In any open office, airport lounge or hotel lobby, Plenum offers the possibility of a refuge, suitable for concentrating in privacy, working in groups or being social in pairs. Plenum is perfectly suited for contract as it is upholstered in the strongest polyester materials.





# THE CONCEPT

## ACTIVITY-BASED SPACE PLANNING BY FRITZ HANSEN

Different spaces serve different purposes and these purposes can be met by the concept of activity-based space planning. While the concept has existed for some time, we strive to influence how today's offices and public spaces can be designed with both functionality and aesthetics in the pursuit of well-being.

Designing solutions for spaces, and for the people inhabiting them, is key. Fritz Hansen believes that a good environment goes beyond the functional space to the actual experience of a space. We believe that an aesthetic location can increase the wellbeing of the people using it, reduce the feeling of stress and in general create a higher user satisfaction. With Plenum

the pursuit of absolute well-being in any space has started – and by the finishing line there exists greater collaboration, better concentration and more welcoming relaxation.

### PLENUM™ IS:

- Flexible in use
- Easy to assemble
- Aesthetic from every angle
- Comfortable for work and leisure
- Crafted in the best materials
- A long-lasting design

### COMFORT CAVE

Comfort goes hand-in-hand with convenience in Plenum. It provides you with a comfortable seat and a genuine feeling of home.

### INDIVIDUAL TOGETHER

With Plenum you have the possibility of creating a sense of privacy in an open space – be it in an office or perhaps even a restaurant.

### ONE ROOM, SEVERAL SPACES

When the open office needs enclosed spaces, the modular Plenum system can build walls as well as break down barriers.

### OUT WITH THE COLD

In with the warm. Plenum defies the traditional square, impersonal office furniture with its curvaceous, organic design.

### FEEL AT HOME AT WORK

Plenum provides an instant feeling of home: a feeling that translates to well-being and security.





INTERVIEW

# RETHINKING THE OPEN OFFICE



Is it possible to create office furniture that combines comfort and aesthetics? Fritz Hansen's Head of Design Christian Andresen and designer of the Plenum sofa system Jaime Hayon have no doubt that the answer is yes. But the recipe requires an abundance of experience, attention to details and the courage to think differently.

## SOLUTIONS BEFORE PRODUCTS

The initial thoughts behind creating a design like Plenum was a search for the best solutions rather than the product itself. According to Head of Design at Fritz Hansen Christian Andresen there has been a shift in the market from designing a product to designing a solution.

With Plenum, Fritz Hansen has revised their collection and created a design that lives up to the need for flexibility and longevity found in today's workplaces and public spaces. "A high-back sofa is far from a first mover product – but we do believe that Plenum, with its emotional appeal, offers a solution that the market has not yet seen. A solution where one single piece of furniture can enhance and encourage both collaboration, concentration and relaxation" Andresen underlines.

Designing for the sake of the visual, the rational and the emotional is the absolute trinity that constitutes the Fritz Hansen design DNA and is found in every item in the collection.

## IT'S IN THE DNA

Plenum might be Jaime Hayon's first contract sofa-system design, but it is a clear reflection of his playful approach to designing furniture for the home. The Spanish designer challenges conventions, brings warmth to cold environments and softens the sharp edges of traditional public spaces. "It is important to remember that my design is made for humans – to be used by humans", Jaime Hayon says. "I believe that design should provoke emotions, make you feel good and create happiness."

Humanising traditional office furniture is exactly what the designer strives for with Plenum. About the collaboration with Jaime Hayon, Andresen says: "Plenum is born from a family of Hayon designs: the Ro™ and the Fri™ chairs as well as the Lune™ sofa.

Every one of these items were originally designed for the private home but have proven to fit perfectly in numerous public spaces all over the world," Andresen concludes. Choosing Jaime Hayon to refine and rethink office furniture together with Fritz Hansen accommodates a shift towards activity-based spaces.

As the designer himself puts it: "In creating Plenum, the overall objective was to challenge the concept of traditional office furniture and create a feeling of home." In other words, Plenum has taken the best of both worlds and caters for emotional and functional needs simultaneously.

## CREATING AN ENTIRE EXPERIENCE

In the modern workplace, one piece of furniture sometimes needs to fulfil several needs – be it the need for silence or for socialising. The rise of new ways of working calls for new ways of designing spaces "With Plenum we want to create a space that welcomes both collaboration, concentration and relaxation" concludes Christian Andresen.



# THE MATERIALS

Plenum is perfectly suited for contract as it is upholstered in the strongest polyester and polyurethane foam materials and it comes in a variety of textiles.

Among them are the two strong and resistant Revive100% recycled polyester with a Martindale of 60.000 as well as the polyester blend Messenger with a Martindale of 65.000. Plenum is created to stand the test of time and rigorous daily use in a wide variety of different environments – from a well-attended airport lounge to an open multi-functional office. Both textiles are recycled polyester blends that ensure a long-lasting result fit for contract. Furthermore, both textiles are created in distinctive patterns adding a vivid look and a textured feel. Plenum's four-legged base is powder-coated black steel.

## ASSEMBLY

The Plenum™ sofa are delivered “knock down” due to the size of the sofa. Therefore, the sofa is constructed to be assembled as easy and smooth as possible and with a need of only two persons and a few tools. The modules are provided with pre-mounted metal threads to ensure durability and easy assembling/disassembling. Assembly guidelines will be included in the packaging.

## ACCESSORIES

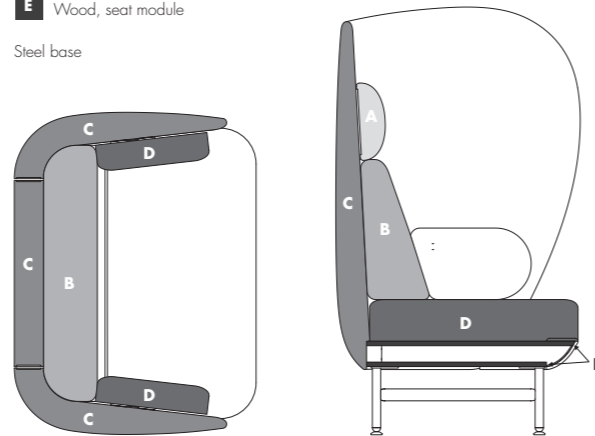
Right and left side table (incl. base).  
Table top moves approx. 86°  
Power unit with 1 x regular plug and a double USB 1,5A outlet

## CUSHIONS AND FOAM

Seat, back and side cushions are made of cut HR Foam, to ensure durability and comfort. Screens and neck cushion are made of molded Low emission HR MDI polyurethane foam with embedded steel or plywood support.

- A** Molded-foam, neck cushion (Soft)
- B** Cut foam back-cushions (soft)
- C** Molded foam, panels (Soft)
- D** Cut foam seat-cushions (firm)
- E** Wood, seat module

Steel base

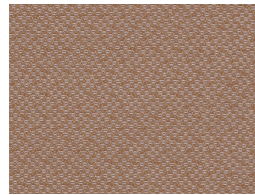




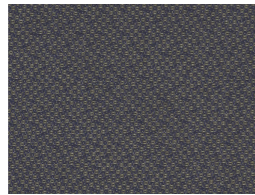
# THE COLOURS

For Plenum there is a tone for every taste. The sofa comes in a wide array of colours and among them are the special design selections in contemporary colours varying from a bright rose pink to a classic navy blue for a timeless appearance – both in terms of aesthetics and functionality.

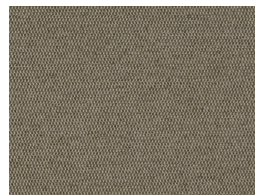
## PLENUM SOFA DESIGNER SELECTION



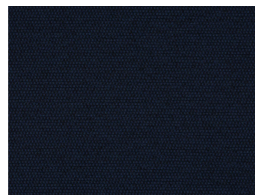
PINK: REVIVE 433



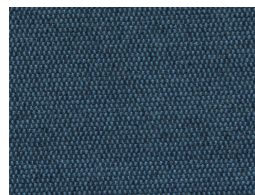
DARK GREEN: REVIVE 973



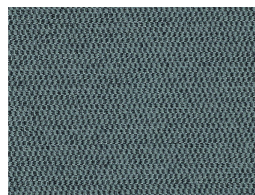
SAND: MESSENGER 081



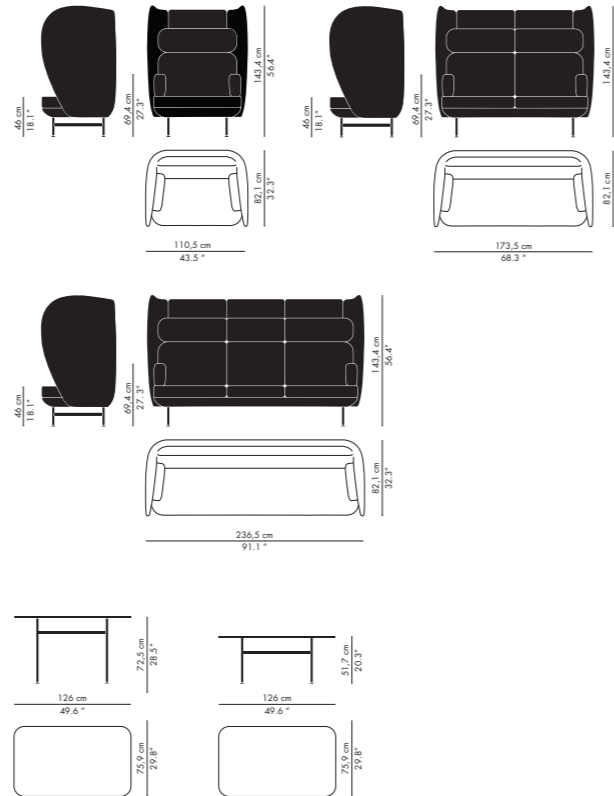
DARK BLUE: MESSENGER 086



SEA BLUE: MESSENGER 061



GREY: MESSENGER 031



# FEATURES

Every version of the Plenum sofa has the possibility of a clip-on power unit in black, which includes one regular plug and two USB ports; the power unit shall be mounted with two screws under the sofa. Furthermore, three types of tables can be added to Plenum: a mounted swivel table (left or right side), a low lounge table and a work table.

Each table version consists of:

- Light grey laminate (HPL) Formica F7961M
- 19 mm particle board with a 1 mm black ABS edge.

